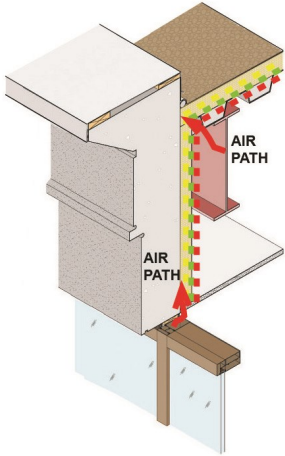


Industry Update



Historically, vapor retarders have often been utilized as a means for reducing the potential for condensation and moisture accumulation in roofing assemblies. Current studies indicate vapor migration by air transport is often far more detrimental than diffusion, focusing more attention to air barriers. **Updated energy codes have also started placing greater emphasis on air control and the use of thermal barriers in the building enclosure to reduce energy consumption.** Both air and thermal barriers rely on suitability and continuity of the materials in order to prevent uncontrolled air leakage or heat loss. RRJ authored an article, **Roof Design and Preconstruction Considerations for Heat, Air and Vapor Control**, in RCI's Interface for use by project teams prior to construction that can help to prevent future performance problems and increase understanding of the current guidelines, codes, and standards. [Read more>>>](#)



Tech Tip

Structural insulated panels (SIPs) are an alternative to conventional wood framed construction. They can save builders time and money and be used to produce high-performing green buildings. Modifications or repairs to SIPs are typically more complex than typical wood framing repairs and should be evaluated by a structural engineer. [Read more>>>](#)

New Logo, New Location

RRJ is pleased to announce some exciting changes. First, we have updated our corporate logo, as seen above, to provide a more modern look, while still honoring the original design.

Second, we have relocated our corporate office. This move marks an important milestone in RRJ's history and is an example of the continued success of the firm. Our new accommodations offer increased areas for staff collaboration, additional private offices, enlarged library space, and updated laboratory facilities. Materials once housed off-site are now accommodated within on-site storage for greater efficiency and easy accessibility. The new office also provides RRJ with additional conference rooms and meeting spaces to allow us to better serve our clients.

Please feel free to stop by and visit us. Our new address is:

500 Joliet Road
 Suite 200
 Willowbrook, IL 60527-5618

[Download Vcard](#)

Grain Elevator Collapse



RRJ was recently retained to review the partial collapse of a grain storage facility located in the Midwestern United States. A wind storm caused the complete collapse of the elevator and conveyor system and collateral damage to the grain storage bins. Services provided included:

- Review of project documents
- Documentation of damaged components
- Structural analysis of the grain elevator and support towers
- Litigation support

Through its review, RRJ identified several failure mechanisms not previously considered by other parties that either contributed to or caused the collapse. [Read more>>>](#)

RRJ Staff News

RRJ congratulates RRJ Senior Architect and Associate **Sarah Flock** and RRJ Principal **Garth Hall** as the recipients of the **Horowitz Award** for their publication, **Roof Design and Preconstruction Considerations for Heat, Air and Vapor Control**, in RCI's Interface (see the link above in the Industry Update section). The Horowitz Award was established in 1996 and is granted by RCI, Inc. to recognize noteworthy technical articles.

Karen Zimnicki, RRJ Senior Architect and Associate, was elected to the **Sealant, Waterproofing & Restoration Institute (SWRIInstitute)** Board of Directors for the 2012 to 2015 term and as the Technical Resource Committee Chair through the 2013 term. The SWRIInstitute is a respected organization comprised of contractors, manufacturers, and associate members that provides education, publications, and forums for discussion related to the application, manufacture, and design of sealant, waterproofing, and restoration products.

RRJ's website at www.rrj.com offers additional information about our projects,